

## Purified Anti-Human CLEC-2 Antibody[AYP1]

catalog number: AN008900P

**Note:** Centrifuge before opening to ensure complete recovery of vial contents.

### Description

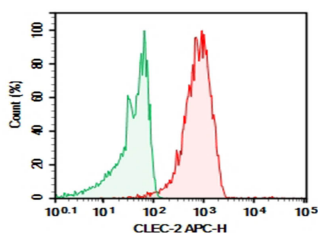
<b>Reactivity</b>	Human
<b>Immunogen</b>	Recombinant Human CLEC-2 protein
<b>Host</b>	Mouse
<b>Isotype</b>	Mouse IgG1, κ
<b>Clone</b>	AYP1
<b>Purification</b>	>98%, Protein A/G purified
<b>Buffer</b>	Phosphate-buffered solution, pH 7.2, containing 0.05% non-protein stabilizer. Dialyze to completely remove the stabilizer prior to labeling.

### Applications

### Recommended Dilution

<b>FCM</b>	2 µg/mL (0.5×10 <sup>6</sup> -1×10 <sup>6</sup> cells)
------------	--

### Data



Human peripheral blood platelet cell were stained with 0.2 µg Purified Anti-Human CLEC-2 Antibody[AYP1] (Right) and 0.2 µg Mouse IgG1, κ Isotype Control (Left), followed by APC-conjugated Goat Anti-Mouse IgG Secondary Antibody.

### Preparation & Storage

<b>Storage</b>	Store at 4°C valid for 12 months or -20°C valid for long term storage, avoid freeze / thaw cycles.
<b>Shipping</b>	Ice bag

### Background

C-type lectin domain family 1 member B (CLEC1B, CLEC2) is a 32kD, type II transmembrane protein, highly expressed on platelets and megakaryocytes. CLEC1B is involved in platelet activation and aggregation, and mediates the capture of HIV-1 by platelets. CLEC1B contains one hem-immunoreceptor tyrosine-based activation motif (hemITAM) through which interact with Syk and PLC-g. The known ligands of CLEC1B are rhodocytin and podoplanin.

### For Research Use Only